



Seeing the Forest for the Trees:

Habitat Restoration in the Emerald Ash Borer Era

Kari Dupler, PWS

SWS-PNW Chapter Conference



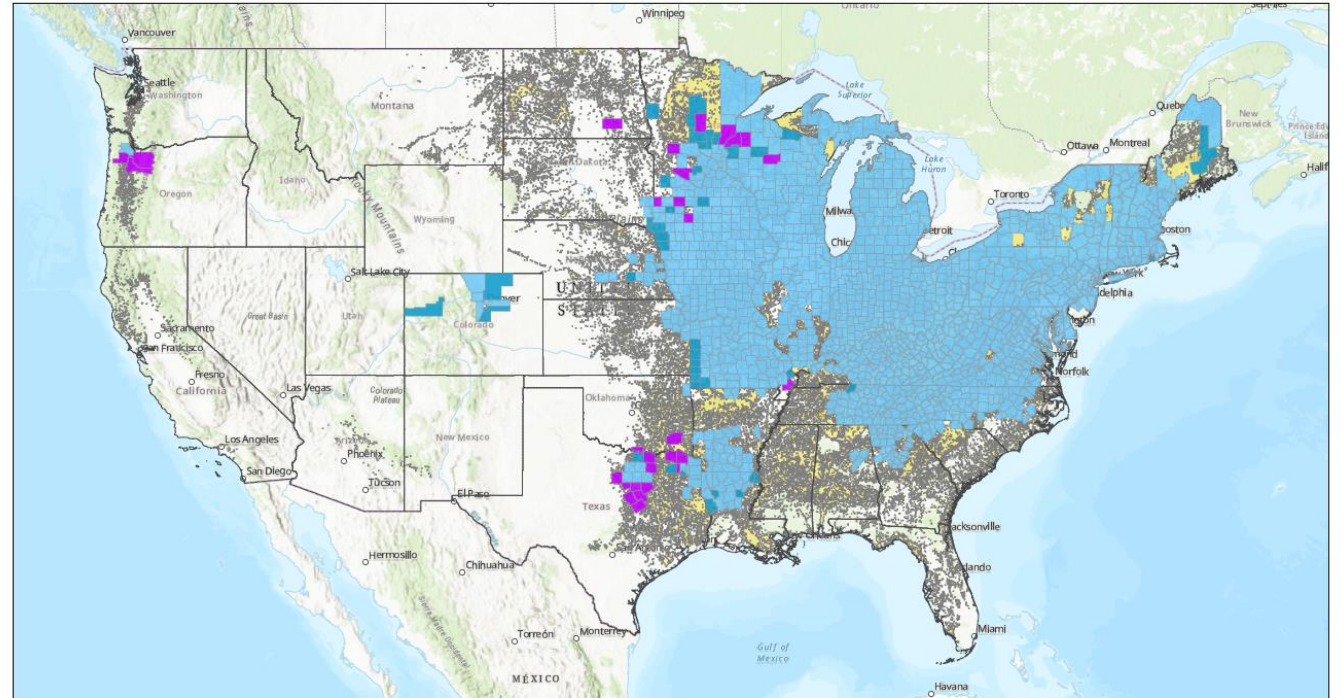


- 🌱 Ash in the PNW
- 🌱 Long-term Impacts
- 🌱 Planting Alternatives
- 🌱 Restoration Planning



City of O'Fallon

Emerald Ash Borer Beetle Known Infested Counties

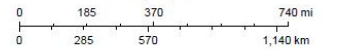


10/2/2024, 10:43:28 AM

EAB Known Infested Counties

- 2002 - 2022
- 2023
- 2024
- Ash - Local Scale (detailed)

1:18,489,298

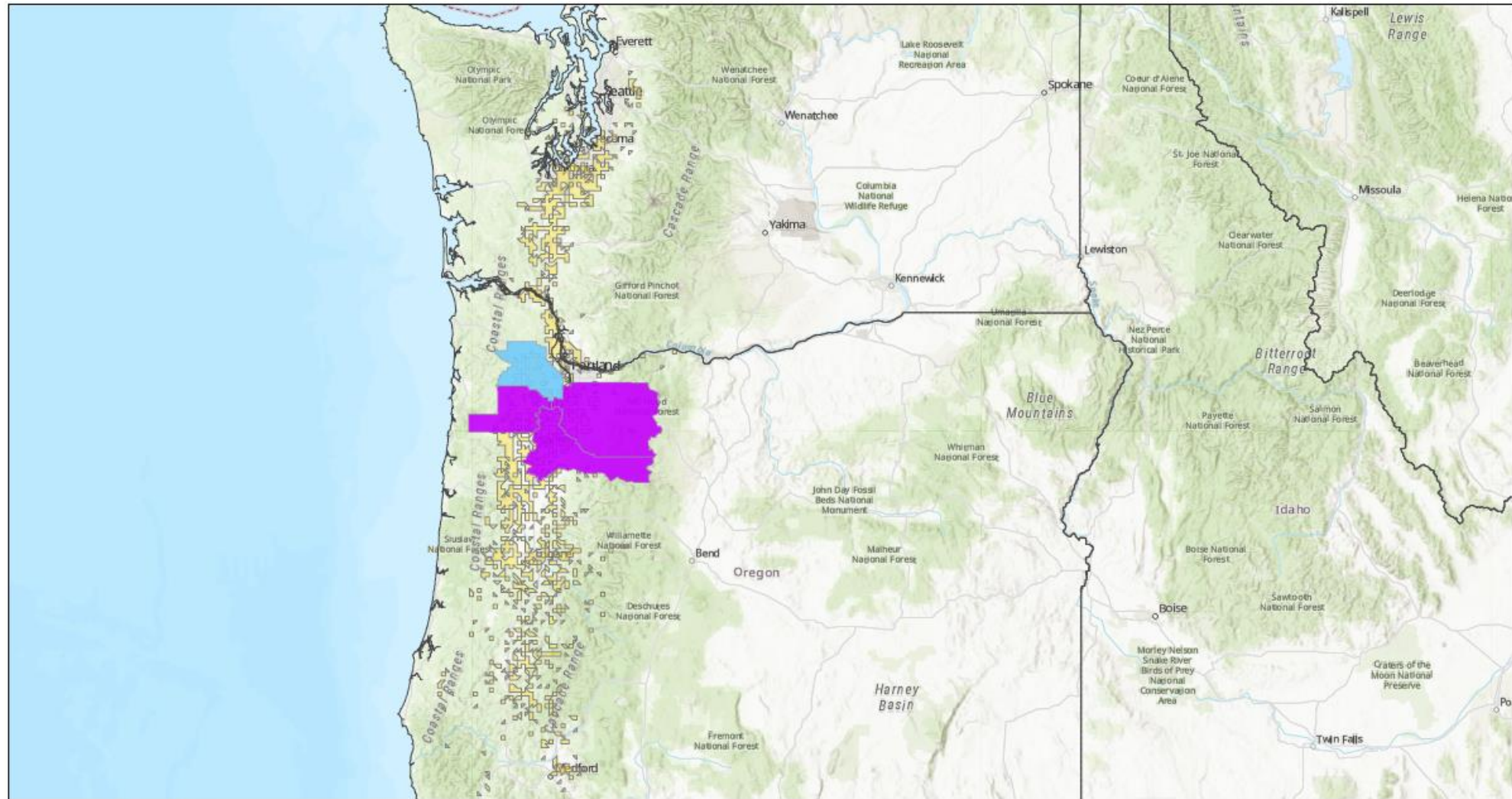


Esri, TomTom, Garmin, FAO, NOAA, USGS, EPA, USFWS, Esri, USGS

Esri, USGS | Missouri DNR, Esri, TomTom, Garmin, FAO, NOAA, USGS, EPA, USFWS | Sources: Esri, U.S. Department of Commerce, Census Bureau; U.S. Department of Commerce (DOC), National Oceanic and Atmospheric Administration (NOAA), National Ocean Service (NOS), National Geodetic Survey (NGS) USDA APHIS PPQ



Emerald Ash Borer Beetle Known Infested OR WA

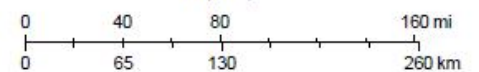


10/2/2024, 12:54:09 PM

EAB Known Infested Counties

- 2002 - 2022
- 2024
- Ash - Local Scale (detailed)

1:4,622,324



Oregon State Parks, Esri, TomTom, Garmin, FAO, NOAA, USGS, Bureau of Land Management, EPA, NPS, USFWS, Esri, USGS



Ash Contributions

Habitat

Nutrients

Culturally
Important



Ash Contributions

Habitat

Nutrients

Culturally
Important



Ash Contributions

Habitat

Nutrients

Culturally
Important





Impacts of Long-term Ash Loss

Habitat Shifts

Ecological
Processes



Impacts of Long-term Ash Loss

Habitat Shifts

Ecological
Processes



Restoration Planning

Ash Alternatives

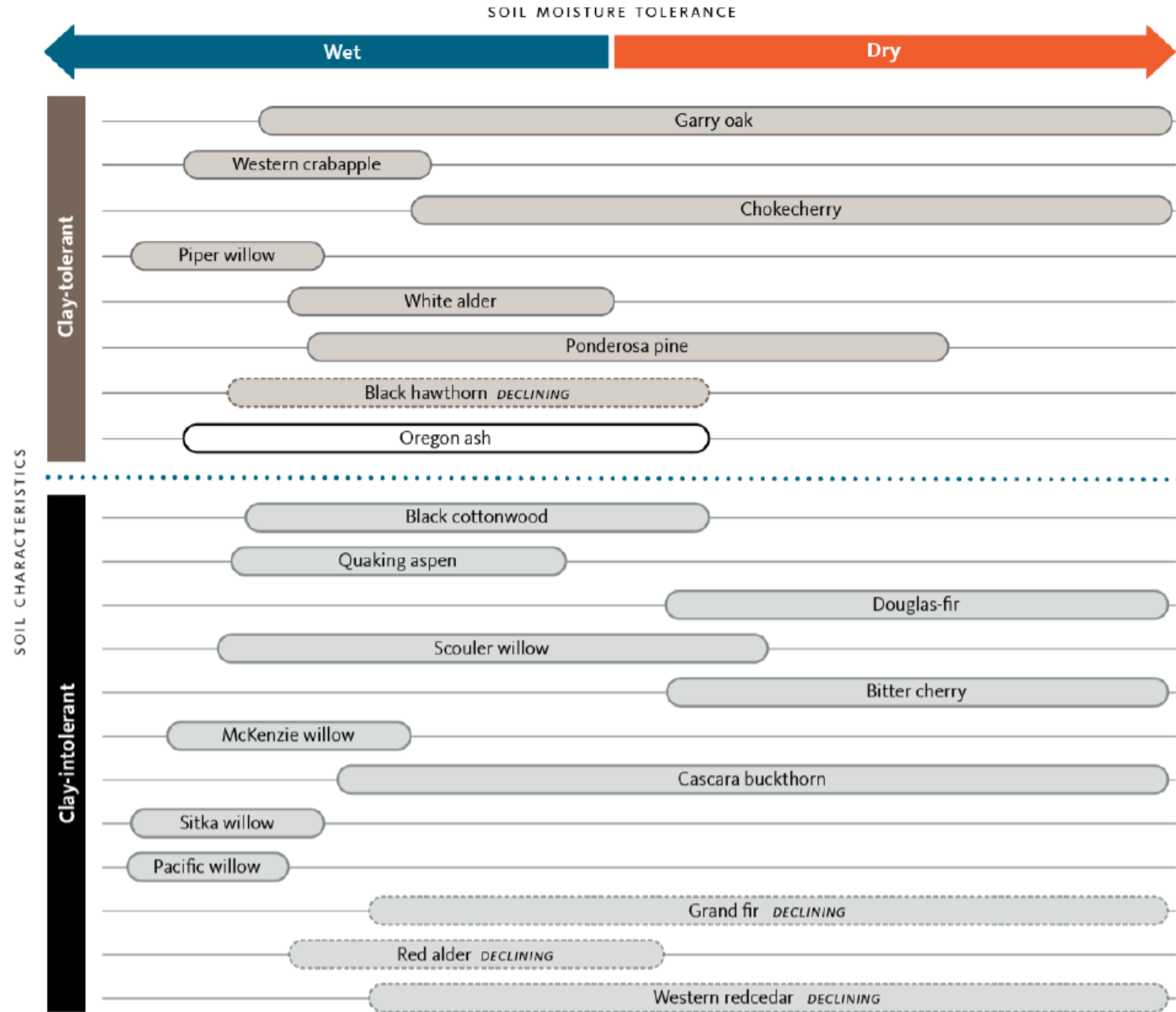


Lower Columbia
Estuary
Partnership

Restoration Planning

Ash Alternatives

Alternatives to ash by soil type and moisture tolerance





Restoration Planning

Ecological Interactions





Restoration Planning

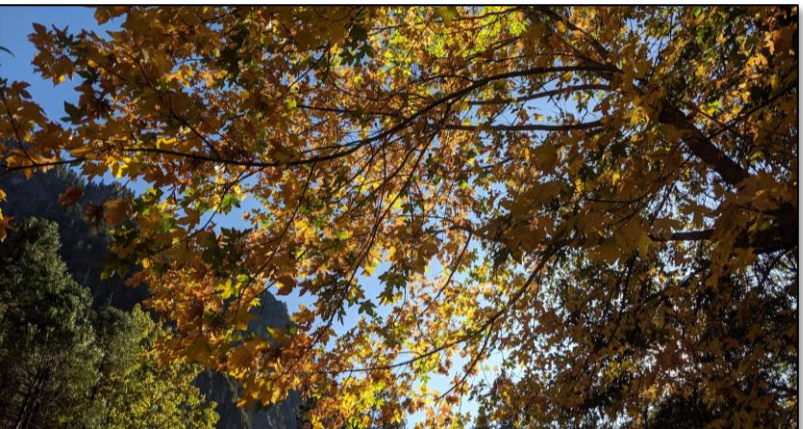
Site Management





To plant or not to plant...





No simple solutions.





Questions or Comments?

Kdupler@estuarypartnership.org