



# Ecology Now!

A brief account of the latest at the agency.

Doug Gresham, Regional Wetland Specialist

10 October 2024

SWS PNW Mini-Conference, Dayton, Oregon



# Story line



- Current grant projects
- Rating system
- Stream Function Assessment Method
- WOTUS in WA
- Grant programs
- Contacts



# U.S. Environmental Protection Agency Wetland Program Development Grants

## Current projects

---

Mitigation  
Monitoring  
Guidance



# Mitigation Monitoring Guidance



Identify current protocols



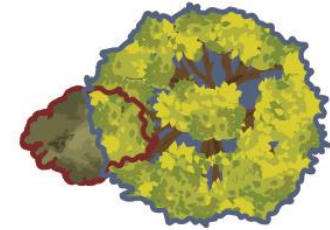
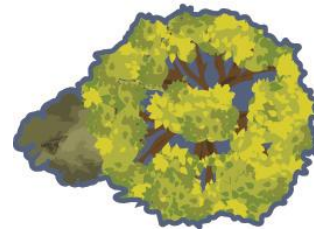
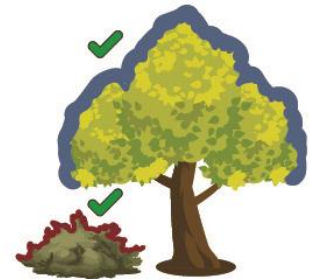
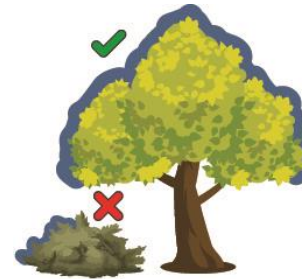
Advisory team



Guidance document



Training



Aerial cover

Species cover

**Rich Jones, Project Manager**  
richard.jones@ecy.wa.gov



**NEW**

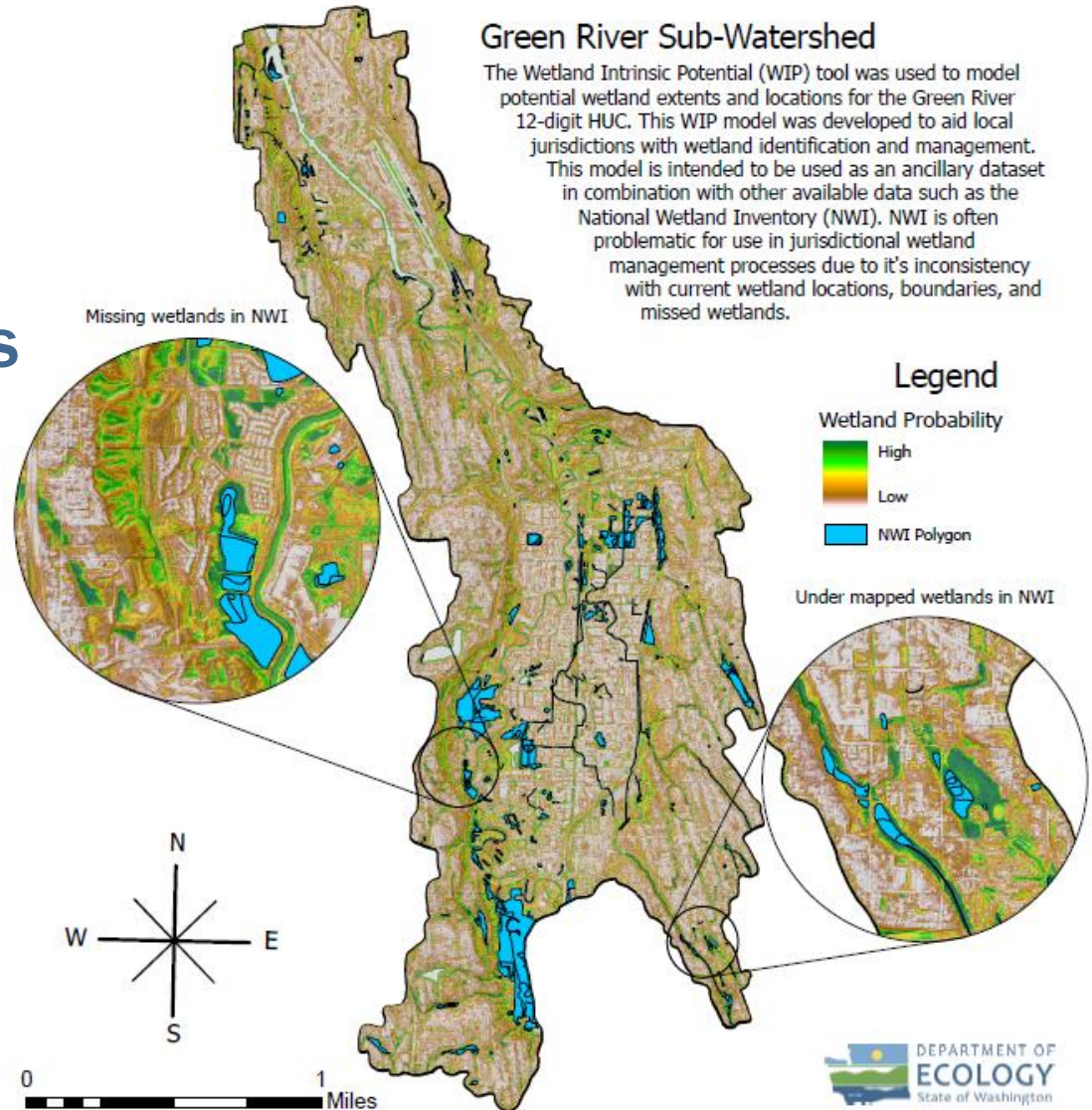
# U.S. EPA Wetland Program Development Grants

## Current projects

# Wetland Intrinsic Potential (WIP) Mapping

### Green River Sub-Watershed

The Wetland Intrinsic Potential (WIP) tool was used to model potential wetland extents and locations for the Green River 12-digit HUC. This WIP model was developed to aid local jurisdictions with wetland identification and management. This model is intended to be used as an ancillary dataset in combination with other available data such as the National Wetland Inventory (NWI). NWI is often problematic for use in jurisdictional wetland management processes due to its inconsistency with current wetland locations, boundaries, and missed wetlands.

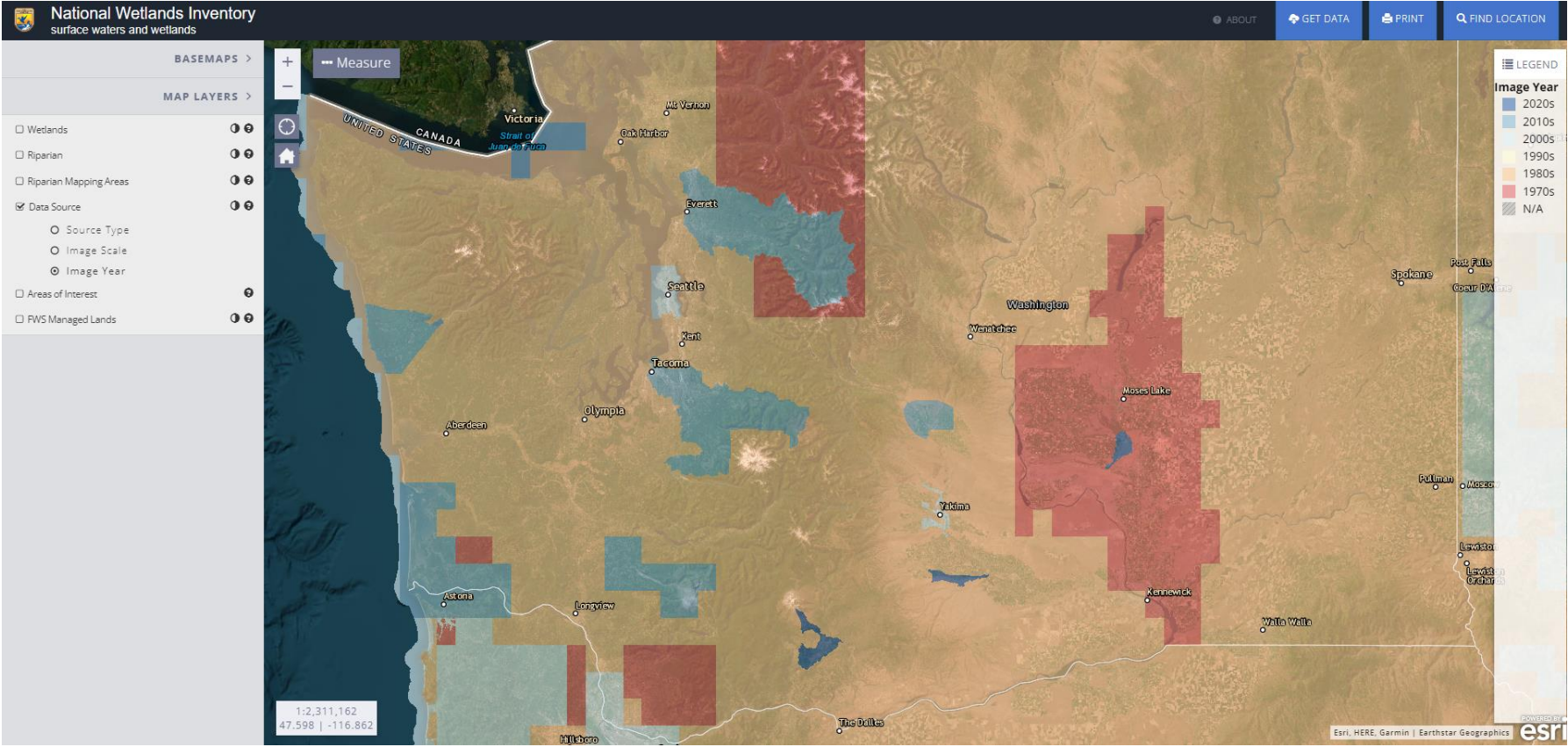




# U.S. EPA Wetland Program Development Grants Current projects

## Wetland Mapping Guidance

Hiring in process for mapping projects position!  
Contact Lauren Driscoll (lauren.driscoll@ecy.wa.gov) if interested.





## Tools & resources

Contacts by subject & region

Rating system

Delineation resources

**Mapping resources**

Map inventory project

Hiring a qualified wetland professional

Best available science

Credit debit method

Function assessment project

National Wetland Condition Assessment

Wetland program plan

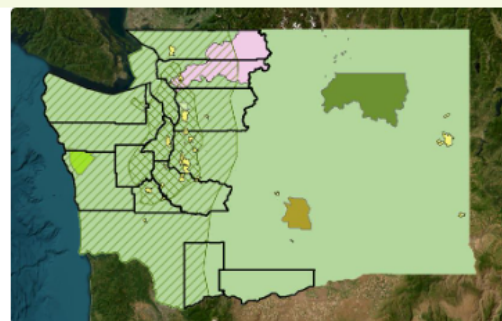
Wetlands & climate change

# Wetland mapping resources

We are committed to providing public access to wetland maps and geospatial data.

## Now available: Results of statewide wetland mapping inventory project

Locations of existing and ongoing [wetland mapping projects](#) in Washington.



The statewide interagency workgroup that developed the [Washington Wetland Program Plan](#) identified the following objectives related to wetland maps and geospatial data:

- Improve wetland mapping through implementation of phased mapping efforts.
- Develop a web-based mapping system for permit activities.
- Inventory wetland status and trends.
- Integrate wetland data with web-based data management platforms.
- Provide local governments access to mapping tools.

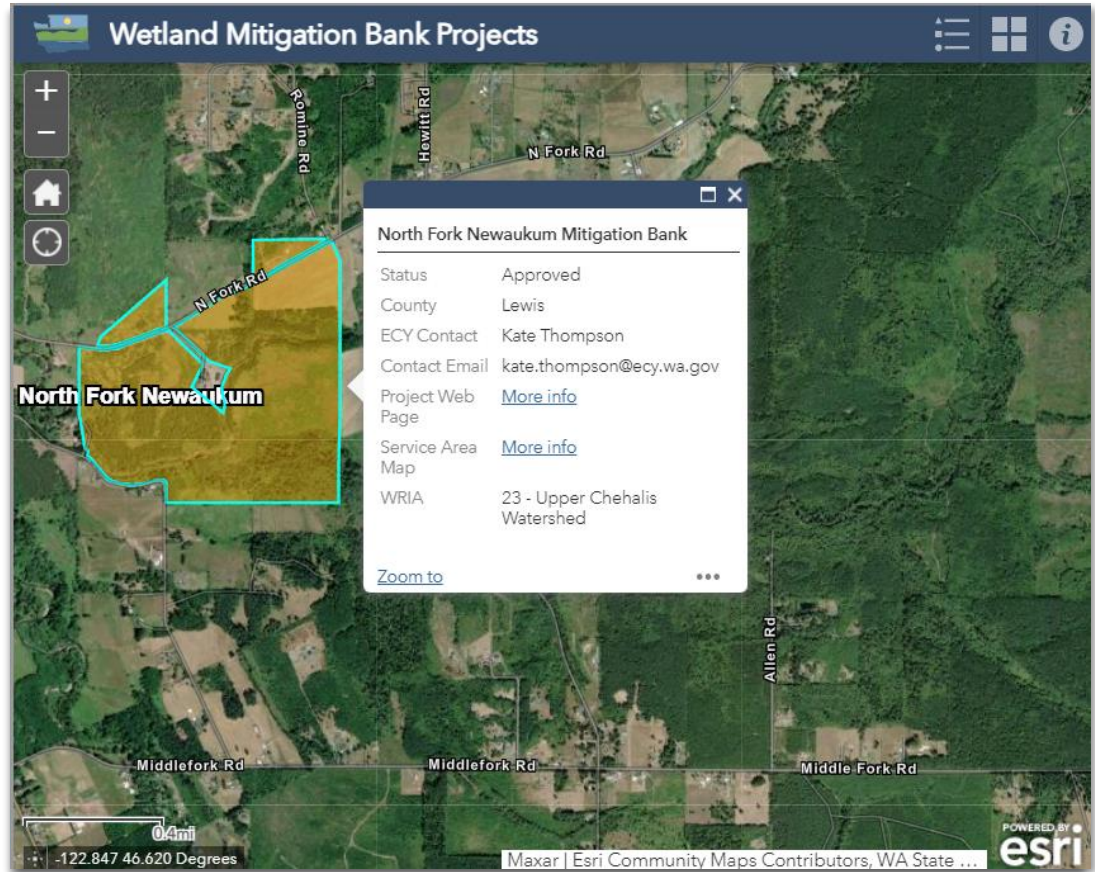
To help address these objectives, we received support from several grants funded by the Environmental Protection Agency (EPA). For example, in 2022 and 2023 we were focused on an EPA-funded grant to conduct a [statewide wetland mapping inventory project](#).

Below you will find information about other past and current wetland-mapping efforts, as well as links to available wetland map products and geospatial data.



# Wetland Mitigation Banking Program

## Interactive Map Updates



View the current map:

<https://ecology.wa.gov/water-shorelines/wetlands/mitigation/wetland-mitigation-banking/mitigation-bank-projects>



COMING  
SOON

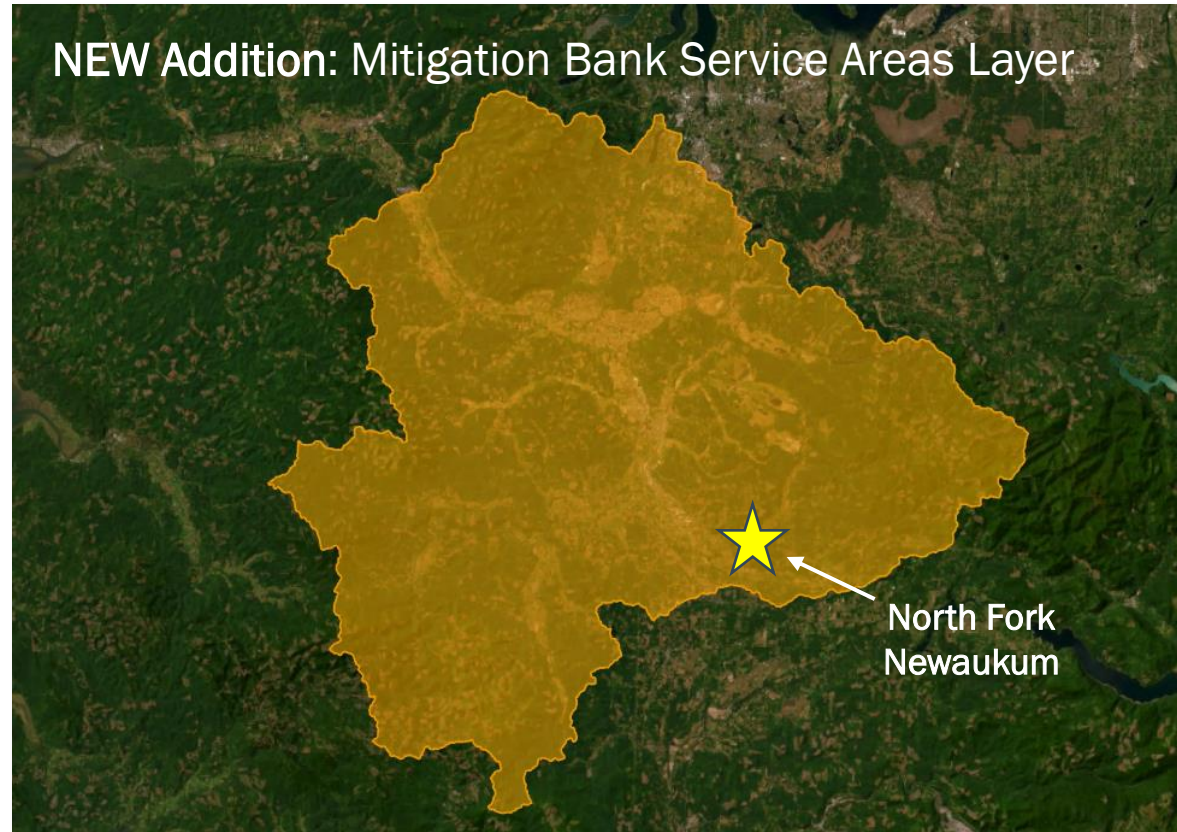
## Wetland Mitigation Banking Program

### Interactive Map Updates

#### Anticipated 2025 updates include:

- Add recently approved and prospective Banks
- Incorporate new attribute information
- Add service area layers for approved Banks

#### NEW Addition: Mitigation Bank Service Areas Layer

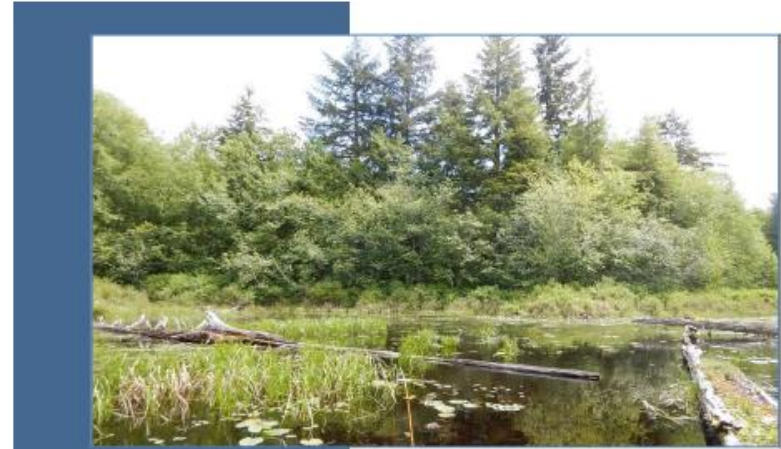


View the current map:

<https://ecology.wa.gov/water-shorelines/wetlands/mitigation/wetland-mitigation-banking/mitigation-bank-projects>



Now available:  
Version 2.0 for  
western WA!



## Washington State Wetland Rating System

For Western Washington  
2014 Update Version 2.0

By

Thomas Hruby, PhD and Amy Yahnke, PhD

For the

**Shorelands and Environmental Assistance Program**

Washington State Department of Ecology  
Olympia, Washington

October 2014 (updated July 2023)  
Publication 23-06-009



[ecology.wa.gov/Water-Shorelines/Wetlands/Tools-resources/Rating-systems](http://ecology.wa.gov/Water-Shorelines/Wetlands/Tools-resources/Rating-systems)




# Washington Tool for Online Rating (WATOR)



Make sure it's official @ [secureaccess.wa.gov](https://secureaccess.wa.gov)



## Wetlands Rating Tool

 Home

Admin Tools

Question Editor

Map Tool Text Editor

See our website for more information:

[ecology.wa.gov/Water-Shorelines/Wetlands/Tools-resources/Rating-systems](https://ecology.wa.gov/Water-Shorelines/Wetlands/Tools-resources/Rating-systems)



Contact Amy Yahnke directly with issues: [amy.yahnke@ecy.wa.gov](mailto:amy.yahnke@ecy.wa.gov)

# Adapting the Stream Function Assessment Method (SFAM) for WA

Contact: Cinde Donoghue (cinde.donoghue@ecy.wa.gov)

Received: 9 February 2024 | Accepted: 22 July 2024

DOI: 10.1111/1752-1688.13225

RESEARCH ARTICLE



## Function and watershed-based stream mitigation: Lessons from a program development and implementation odyssey in the Western United States

[onlinelibrary.wiley.com/doi/abs/10.1111/1752-1688.13225](https://onlinelibrary.wiley.com/doi/abs/10.1111/1752-1688.13225)

Tracie-Lynn Nadeau<sup>1</sup>  | Dana Hicks<sup>2</sup> | Robert A. Coulombe<sup>3</sup>

<sup>1</sup>Water Division,  
Region 10, U.S.  
EPA, Portland, OR

<sup>2</sup>Aquatic Resource  
Management, Oregon  
Department of State  
Lands, Salem, OR

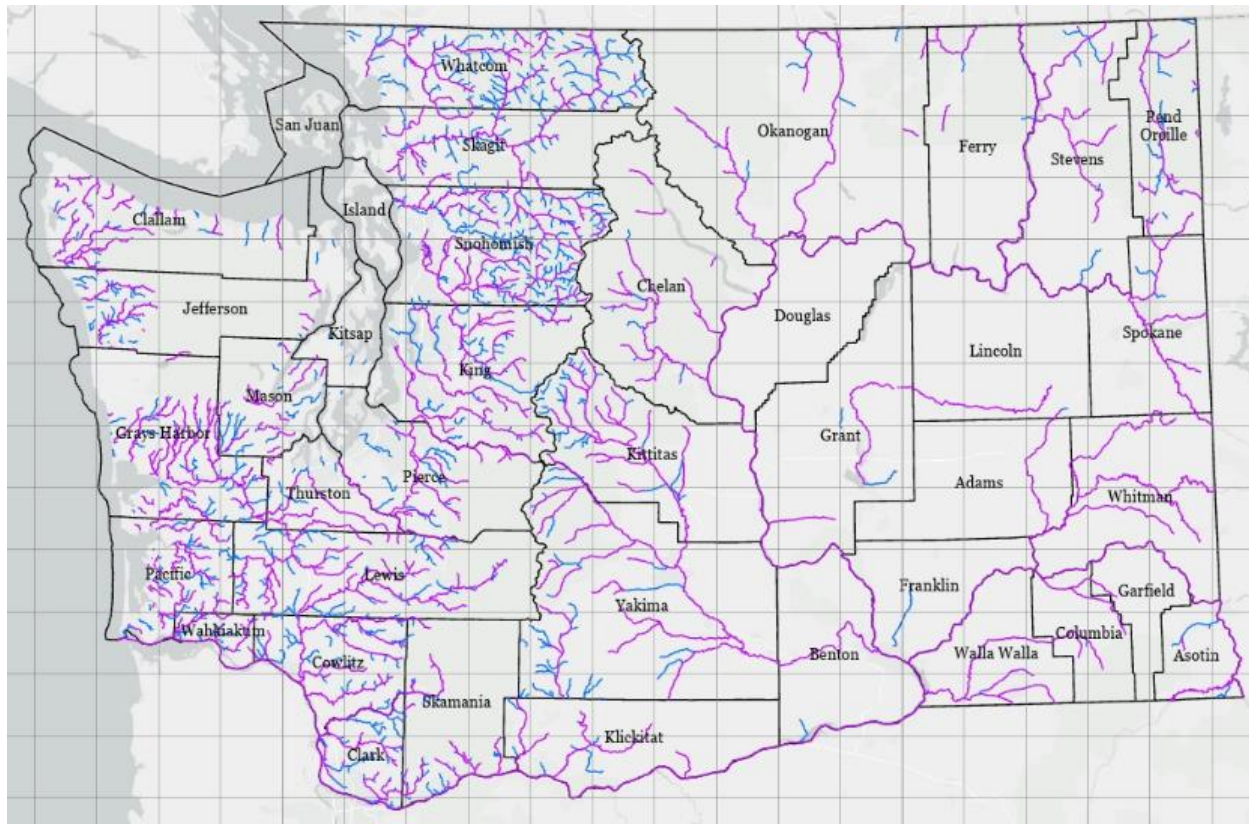
<sup>3</sup>CSS-Inc., Corvallis, OR





# Potential Modifications for Washington

Expand assessment to include larger streams & rivers.



■ Wadeable streams\*

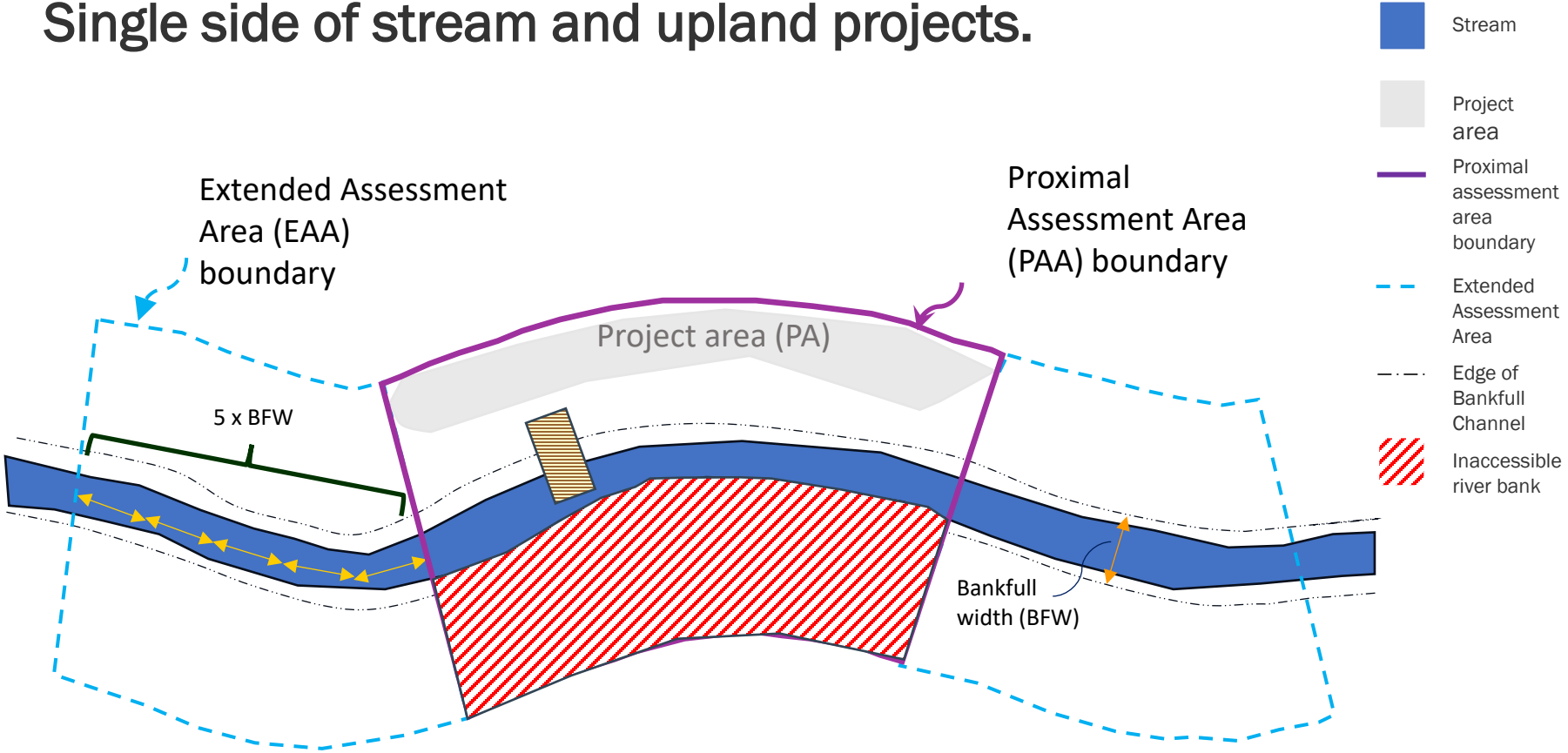
■ Non-wadeable streams\*

\*Estimated from information on:

- Stream stage- compiled from all historical and active stream gauges, from
- Size of stream (length and width where available)
- Elevation data
- Familiarity with specific streams from experts in the field

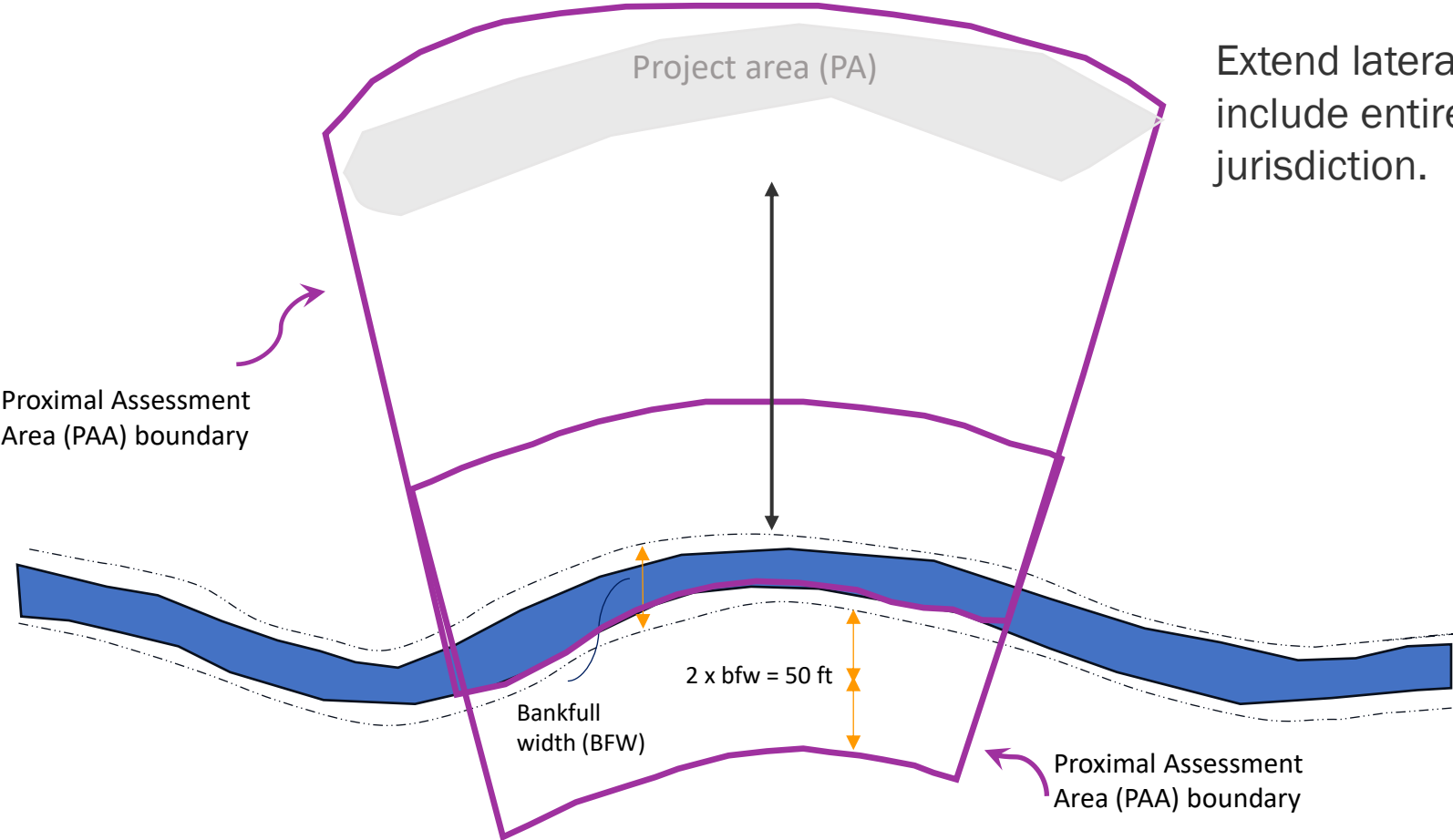
# Potential Modifications for Washington

Single side of stream and upland projects.





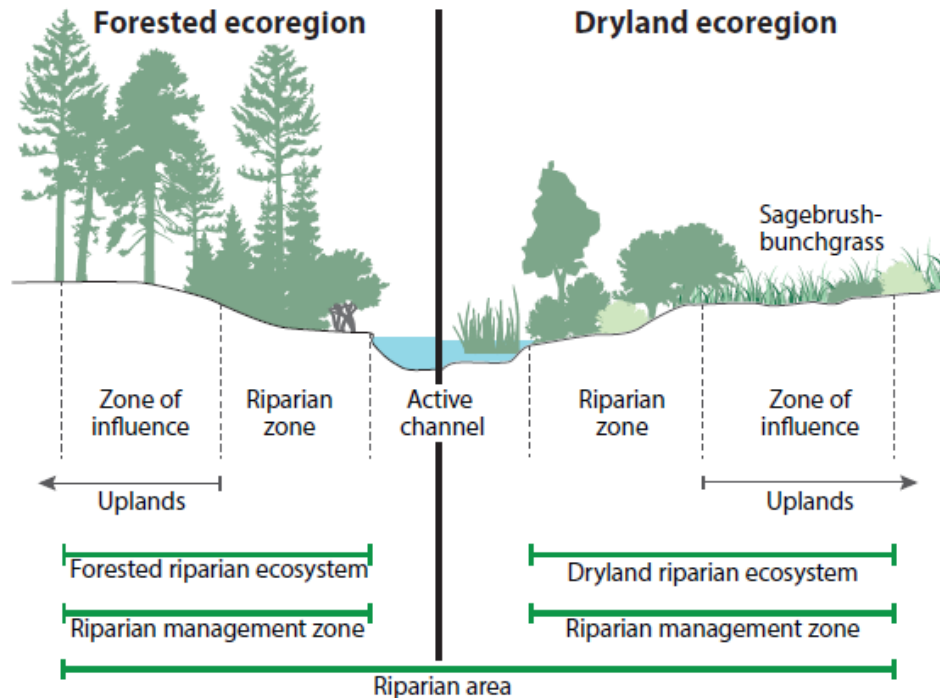
# Potential Modifications for Washington



Extend lateral width to include entire shoreline jurisdiction.

# Potential Modifications for Washington

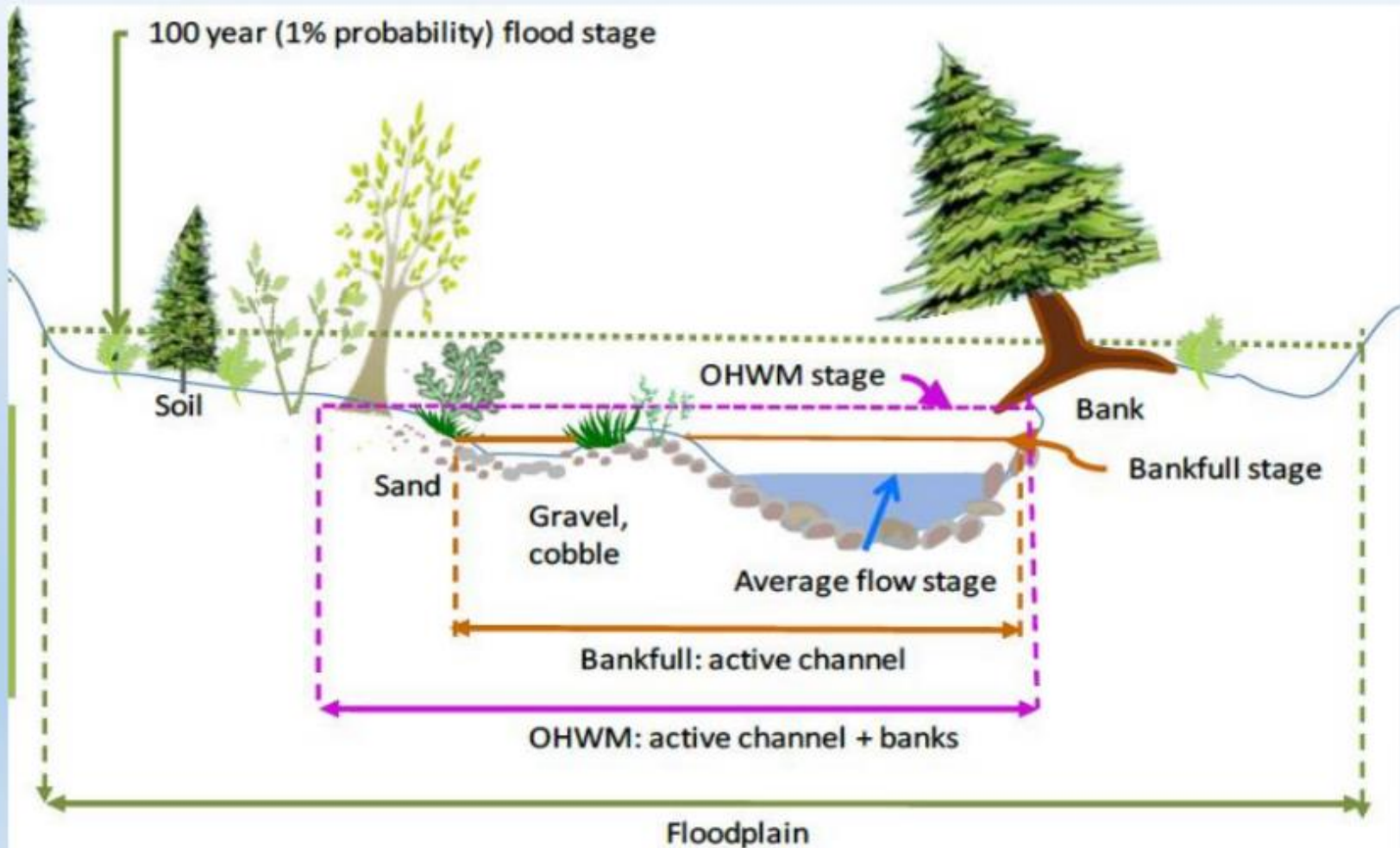
Incorporate Riparian Management Zone based on 200-year Site Potential Tree Height into landscape scale assessment.



# Potential Modifications for Washington

OHWL compared to Bankfull flow (Ecology 2010, pub # 08-06-001\*)

\*Determining the Ordinary High Water Mark on Streams in Washington State







# WOTUS in the time of Sackett



[ecology.wa.gov/water-shorelines/wetlands/regulations/federal-regulations](https://ecology.wa.gov/water-shorelines/wetlands/regulations/federal-regulations)

## Focus on: Protecting state wetlands and streams



**Supreme Court decision weakens federal protections for wetlands and streams**

However, state law still protects these waters.

**How Washington law protects wetlands**



[apps.ecology.wa.gov/publications/documents/2306012.pdf](https://apps.ecology.wa.gov/publications/documents/2306012.pdf)



# See our website for more information on state regulations and Section 401

## Clean Water Act: Section 401 Water Quality Certifications

---



### 2023 EPA Water Quality Certification Rule

**September 27, 2023** - The U.S. Environmental Protection Agency (EPA) has finalized a new rule revising and replacing the 2020 regulatory requirements for water quality certification under Section 401 of the Clean Water Act. The rule is effective Nov. 27, 2023.



[ecology.wa.gov/Regulations-Permits/Permits-certifications/401-Water-quality-certification](https://ecology.wa.gov/Regulations-Permits/Permits-certifications/401-Water-quality-certification)

[ecology.wa.gov/water-shorelines/wetlands/regulations/state-wetland-regulations](https://ecology.wa.gov/water-shorelines/wetlands/regulations/state-wetland-regulations)





# HQ Aquatic Permitting Team

Applications or questions about projects impacting federal and/or non-federally regulated waters should be directed to their email box:

[ecyrefedpermits@ecy.wa.gov](mailto:ecyrefedpermits@ecy.wa.gov)

# Ecology's white hat wetlands work: National Coastal Wetlands Conservation Grants

Acquire, restore, and  
enhance wetlands.



Carpenter Creek Estuary photo courtesy of  
Great Peninsula Conservancy

# 16,000 acres conserved in Washington since 1993.

National Coastal Wetlands Conservation Grants



Johnson Creek Estuary photo courtesy of Great Peninsula Conservancy



# 80 acres of acquisition and 340 acres of restoration in 2024

National Coastal Wetlands Conservation Grants



Elwha River floodplain photo courtesy of John Gussman



# 2025 – applications submitted to acquire 698 acres and restore 66 acres

Fingers crossed!



Trafton (North Fork Stillaguamish) floodplain photo courtesy of Stillaguamish Tribe  
(funded 2024)



# Contact Heather to discuss potential projects!

Heather Kapust

National Coastal Wetlands Conservation Grant Manager

[heather.kapust@ecy.wa.gov](mailto:heather.kapust@ecy.wa.gov)

360-819-3469

National Coastal Wetlands Conservation Grants Website:

<https://ecology.wa.gov/about-us/payments-contracts-grants/grants-loans/find-a-grant-or-loan/wetlands-conservation-grants>





NEW

## Climate Resilient Riparian Systems Lead

Support restoration and  
protection of riparian areas  
in Puget Sound

Use innovative approaches  
to accelerate recovery



## 5 Themes Identified Through Engagement Activities

- Engage private landowners
- Long term stewardship and monitoring
- Support for native plants
- Capacity
- Conservation and enhancement



# Collaboration Around Durable Solutions

- Salmon recovery governance structure
- Landowner Incentives
- Common metrics
- Leverage Market Mechanisms



[ecology.wa.gov/about-us/payments-contracts-grants/grants-loans/find-a-grant-or-loan/climate-resilient-riparian](https://ecology.wa.gov/about-us/payments-contracts-grants/grants-loans/find-a-grant-or-loan/climate-resilient-riparian)





# Who we are



Allan Warren Kayla Seaforth Kas Guillozet  
**Bonneville Environmental Foundation**



Kate Delavan Brian Cochrane  
**State Conservation Commission**



Colin Hume Libby Gier Michelle Quast



Chris Wally Wright  
**Puget Sound Institute**



Linda Lyshall Kristin Marshall  
**Snohomish Conservation District**



Connor Racette Yolanda Holder Michelle Myers

**Department of Ecology**

**Climate Riparian  
Systems Lead**

**Coalition between WA Dept. of Ecology, State  
Conservation Commission, BEF, Snohomish CD, and PSI**



Sign up for  
our email list  
to stay  
informed.

## Wetlands

### Wetlands overview

### Regulations

### Mitigation

### Tools & resources

### Educational resources

## Wetlands: Nature's water filters, sponges & nurseries

More likely than not, there is a wetland near where you live, work, or play. According to a [1990 report to Congress](#), wetlands cover approximately 938,000 acres in Washington state, about 2% of the state's total land area. Since the 1780s, Washington has lost 31% of its wetland areas, from 1.35 million acres to 938,000 acres.

Wetlands are critical to the overall health of watersheds. We protect, restore, and manage the state's remaining wetland resources because of their key role in watershed health.



Skunk cabbage, a wetland indicator plant, emerges in the spring along a trail in a city park in Olympia.

### I want to...

- Contact wetland staff — by region and subject
- Report a potential wetland violation
- Sign up for the wetlands email list to receive updated information on our wetland-related projects



[ecology.wa.gov/Water-Shorelines/Wetlands/Wetlands-overview](https://ecology.wa.gov/Water-Shorelines/Wetlands/Wetlands-overview)

Home

Air & Climate

Water & Shorelines

Waste & Toxics

Spills & Cleanup



Water & Shorelines > Wetlands > Tools & resources > Contacts by subject & region

### Tools & resources

Contacts by subject & region

Rating system

Delineation resources

Mapping resources

Hiring a qualified wetland professional

Best available science

Credit debit method

Function assessment project

National Wetland Condition Assessment

Wetland program plan

Wetlands & climate change

## Wetland contacts by subject & region

Have a wetland-related question? Find our regional wetland and subject-specific wetland contacts.



[ecology.wa.gov/Water-Shorelines/Wetlands/Tools-resources/Contacts-by-subject-region](https://ecology.wa.gov/Water-Shorelines/Wetlands/Tools-resources/Contacts-by-subject-region)

Central region contacts



Eastern region contacts



Northwest region contacts



Southwest region contacts





Contact Regional Wetland Specialists for projects in their areas.



## Northwest Region



Doug Gresham



Neil Molstad



Chris Luerkens

## Eastern Region



Jeremy Sikes

We're hiring!

Leah Beckett

## Southwest Region

Zach Meyer

Meghan Tait

Lizzie Carp



## Central Region

Ryan Anderson



## WSDOT

Caroline Corcoran





# Wetland Mitigation Team



## Banking:

Kate Thompson



## Compliance:

Patricia Johnson



Dana Mock



Kela Hall-Wieckert



Devin Geiger





# Science and policy



**Emily Atkins**  
CAO Coordinator  
emily.atkins@ecy.wa.gov

**Amy Yahnke,**  
Senior Wetland Scientist  
amy.yahnke@ecy.wa.gov

**Lauren Driscoll,**  
Wetlands Section Manager  
lauren.driscoll@ecy.wa.gov



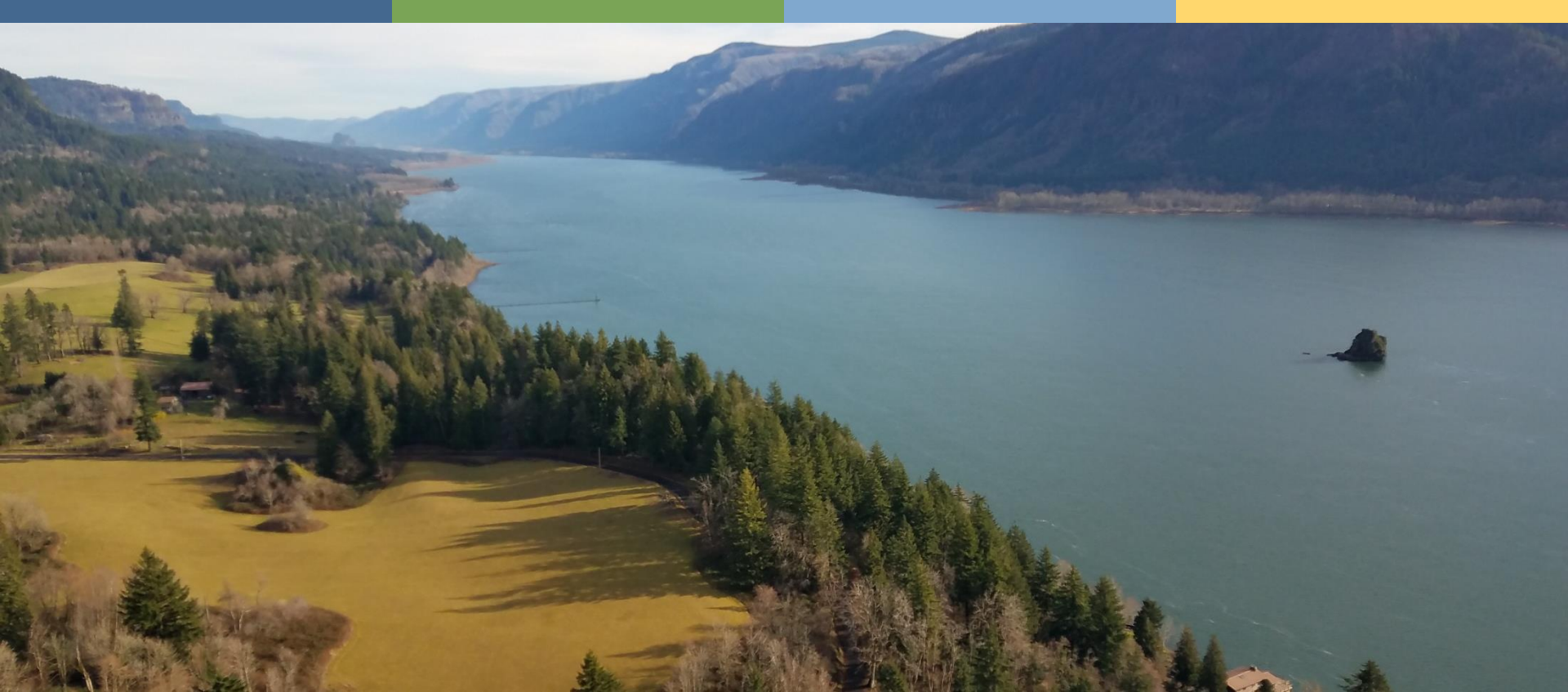


# Happy sails to Rick Mraz!



Retirement in June 2024.





# Thank you!

Doug Gresham (he/him)  
Regional Wetland Specialist  
Washington Department of Ecology  
[doug.gresham@ecy.wa.gov](mailto:doug.gresham@ecy.wa.gov)



## ADA Accessibility

The Department of Ecology is committed to providing people with disabilities access to information and services by meeting or exceeding the requirements of the Americans with Disabilities Act (ADA), Section 504 and 508 of the Rehabilitation Act, and Washington State Policy #188.

To request an ADA accommodation, contact Ecology by phone at 360-407-6831 or email at [ecyadacoordinator@ecy.wa.gov](mailto:ecyadacoordinator@ecy.wa.gov). For Washington Relay Service or TTY call 711 or 877-833-6341. Visit [Ecology's website](#) for more information.