

Building Tribal Wetland Education and Outreach Programs



Woods Lake Wetlands

Presenter: Melissa Gobin
Natural Resources Outreach & Education
Coordinator

Teesha Oasis
Wetland technician



Tulalip Tribes Natural Resource Outreach & Education Tribal Youth Camps



SUMMARY

Connecting with native youth through wetlands, the Woods Lake project will launch our first wetland youth camp.



~Ý†>À ~À Σ' ~Σ†ŽĆ

Indigenous knowledge

, Í %%Σ≠ŽÀ%ō Ž Ž À †>ĆÍ ÝŽ«

Woods lake project and Camp

Funding and insights



TULALIP TRIBES POINT ELLIOT TREATY 1855



Ö ; öš ícícž öðð ; þ Σ úþϕ^¾ ~ Õ þj A; δcÍ ^¾ðð ; þ ©úΩ ð ©úΩþж
 úΣíS Ωúϕ^¾ ; | Ú ðS ©íÒ ρ ж Ú ‘ Ò ϕ ‘ ж©úΩ | ÁĒ Ò ϕ ‘ жа
 a ; ð ; Σ Ò ž ; íí ; Ω ^¾ ð ; í Σ ©^¾ ^¾ a ‘ ©^¾ϕ Ú a ÁÚ a Ú ϕ ^¾ ;
 öš ícícž x ; þ ; ðA©^¾ Ú Õ íí a úϕ ^¾ ; þ ðéúúϕ ~ Õ ^¾ ; u ~ ú^¾
 8 ííð ^¾öð ; ©^¾Ee

Öð f v , /1 ġ 8 ðð , ġ Öþf “ ġí /¹ “ ðd/1 —¿ , í c ù f1 ġ ġð “ ġ
 ð Þ , ġf í ġ¹ ġð f Þ—ð ġ¹ “ 1 ¿ í c ðġc Þf , —ġð f Öc ð ðð Öð/π f π
 əJ /π c ðπ . c ðġc Þf . f1 ġf Þ

Tulalip Sea Native culture. humans recognize they are surrounded by living beings with special gifts and abilities. Salmon, Cedar, Mountains, and Wind. Elders teach people to thank all these Others who provide them with food, shelter, and clothing. They need respect for all things means wasting nothing and helping other beings, for example, by pulling up the undergrowth and loosening soil so Bracken Fern, Camas and other roots may thrive.

starts when the blooming of Indian Plum and the singing of Chorus Frog signal the ebbing of the lowest spring tides call people to the beach to dig Butter Clams. When they hear the call that Thrush gave voices to many of the creatures but reserved for her. In the fall and Salmon run in the fall, heralding the time of cold and dry weather. Stories, songs, and ceremonial gatherings.



INDIGENOUS - KNOWLEDGE

Knowledge is a GIFT, not a privilege

Recognize that certain information may not be disclosed to you.

~Σ†Ž†» ≠Ý>ŽÝ†> ÁopÍ ~, †ŽĂ %ot" " Σ%oo ĂĂ4Σĝ

Be aware of the risks involved in how knowledge is shared.

Make sure you have permission to share information.

@Áoo † " †>†%#Σ" ΣŽF ΣΣ%oo" «†~ Áoo/ %Í F >Σ≥-Σ†%# F Ă««Í >≥Áoo
F «†Ž" «Í Ý>%#Ž" Σ" «†~Σ≥ĝ

Connect with the youth in their own environment

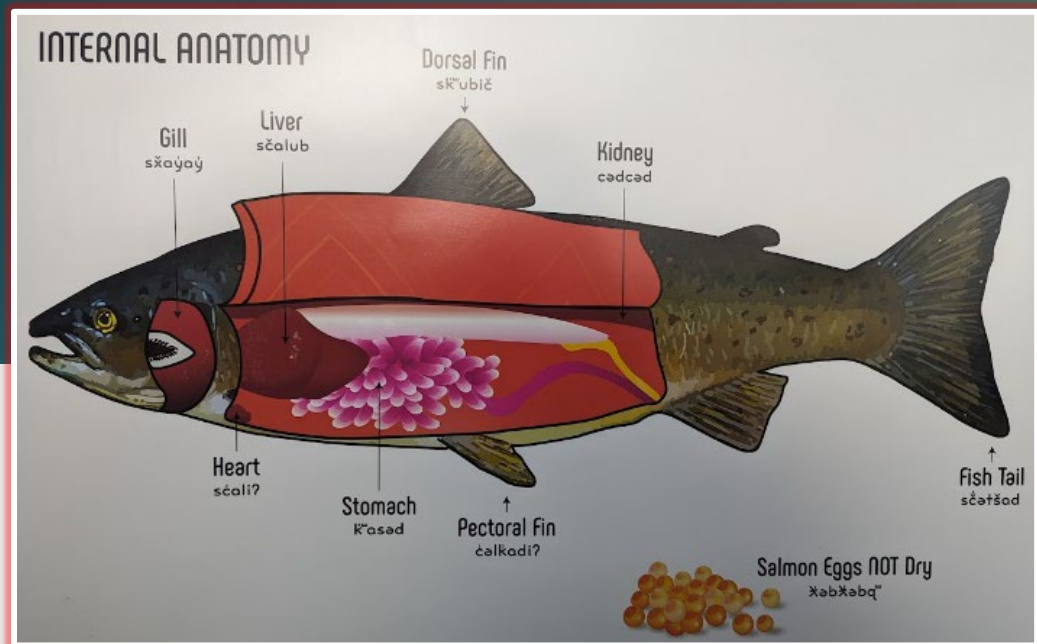
SUGGESTIONS FOR CONNECTING WITH TRIBAL YOUTH

6" Ž†" >À« ĆÍ Ý ^ ~Σ' Σ%#Σ À%Ž« Σ#Í ,, ,, Ý%ŽĆ " Ć
†ŽŽ%œ À% Σ³/Σ%Ž' †%œ >Í ≠†ŽĂ %" F «ΣΣĆÍ ÝŽ« †%œ
i†,, ÀÆ" -†Ž«Σĝ

Be intentional make sure to they know what and why you are teaching them use all the senses

Use cultural connections, when possible

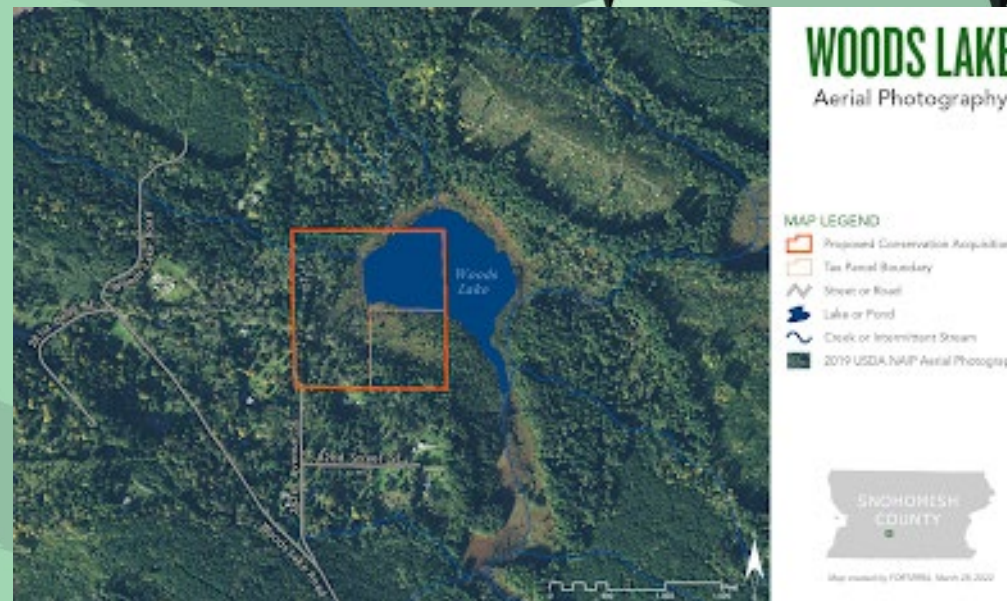




ADDITIONALLY ...

Integrating crafts, activities, and visual aids is beneficial.

RE-UNITING TWO LOCATIONS AND COMMUNITIES TOGETHER




Woods Lake connecting Tribal citizens back to thier ancestral lands, that's central to its usual and accustom land


The goal is to protect the habitat for the wildlife and species that depend on it,

6%ø" >Σ≠Ý>ŽŸ † > †≠Σ" " †%œ
Ž †≥ĂĂ %ø > Ý" Σ'

WOODS LAKE RESTORATION



Beginning in November 2024 , we will be hiring students from Heritage High School to help restore and clean areas twice a week in preparation for our upcoming wetland camp .



Following that, a sheltered area will be constructed with assistance from the Tribal Employment Rights Office (TERO).

ê í í ≥" X†/ Σ ê Σž†%œ , †,,



Tulalips First wetland camp will offer a unique opportunity to immerse our youth in the rich biodiversity and serene beauty of wetland ecosystems. With Bio cultural collaboration we will educate Tulalip Citizens about the ecological importance of wetlands and the cultural significance it has to our people.

What Activities to expect at Tulalip Wetland Camp

- Plant ID, Animal ID, what is invasive and what is native to the land.
- There will be gathering and harvesting of culturally significant plants for teas, medicines, and plants to eat.
- We will learn about what a wetland is and what it does.
- We want kids to connect with the land and with who they are. Allot of our medicinal plants come from the wetland areas and teaching them about this is important.



Teaching them to connect through their senses feeling, hearing, seeing, tasting, and what they are feeling within their spirit

Funding and Insight

Lessons I Learned



- **Look for grants there is allot of grants to get everyone outside being stewards of our land after covid**

- **Look out for programs and grants that can work together**

- **Pass on grants that do not fit your program this is where networking comes in handy**

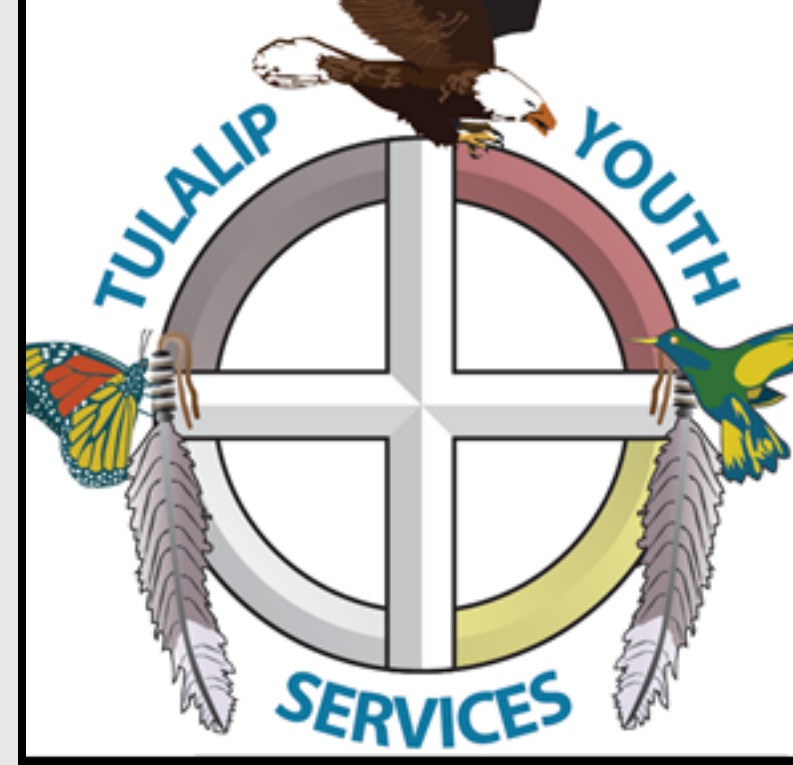
- **Make sure your vision and the collaborators vision aligns together**

- **Network get your name and your program out there**

- **Make sure your vision and the collaborators vision aligns together**

- **Ask for Donations and work with small businesses support one another**

- Plan activities that are active, keep their minds stimulated (harvesting, boats, walk around estuary, fish filleting, building a smoker, fish sticks) – tie in to culture like giving thanks, explaining why its culturally relevant
 - Don't assume attendees know the information already, create a safe environment for them to ask questions
- Age group appropriate activities/discussions for each age group; 1 adult per 2-3 youth
- Manage downtime – quiet time with crafts (painting, beading, drum making), reading, walks/hikes – culturally relevant activities
- Tie in NR element all over (how everything is connected; seasons connected to plants, plants are connected to fish, etc.)
- Keep it focused on a central theme (e.g., Wetland information) and can have tangential activities (harvesting gathering plant id, and managing the land) – maintaining plants, harvesting plants, eatable plants (tying into cultural connections)



tig^wicid!
THANK
YOU!



A Thank you to all of our programs that are working with us to make these camps a great experience